

FRONT WINDOW GUARDS

MESH



SELECTIONS:

- Mesh / Lexan / Combo (Lexan over Mesh)
- Fixed or Hinged

LEXAN



FEATURES:

- Fits Excavators (7-50 Tons)
- Bolt on Design (No Welding)
- Tubular Frame



GUARD w/ HINGE



COMBO

HydrauliCircuit

Technology is your #1 source for heavy duty, durable, and reliable kits that are built to last. As industry leaders, we specialize in manufacturing premier, robust, and easy to install kits designed to power a wide array of attachments across virtually all excavator models.

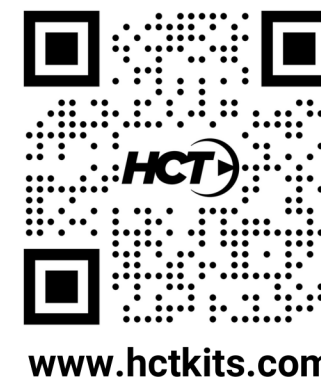
Each kit design goes through a rigorous qualification process that includes user-friendly installation manuals, complete with photos, CAD drawings, and step-by-step instructions for seamless setup. With in-house manufacturing expertise in tube assemblies, hose assemblies, and brackets, we offer flexibility and quality assurance you can count on.

EMAIL:

sales@hctkits.com
techsupport@hctkits.com
parts@hctkits.com

PHONE/FAX:

Toll Free: 888.603.0080
Office: 770.474.2657
Fax: 770.474.6165



www.hctkits.com

HYDRAULIC
TECHNOLOGY



**EXCAVATOR HYDRAULIC KITS
& FRONT WINDOW GUARDS**



**KITS
YOU CAN
COUNT ON**

AUXILIARY HYDRAULIC KITS

HCT offers a large selection of specialized excavator hydraulic kits to meet your industry application requirements.

- Complete Single Acting, Double Acting, & Dual Purpose kits
- Complete Brushcutter or Magnet kits
- Complete Rotation or Tilt kits to fit HCT or Factory kits
- Conversion or Upgrade kits to fit HCT or Factory kits

DEMOLITION



FORESTRY



GENERAL CONSTRUCTION



SCRAP

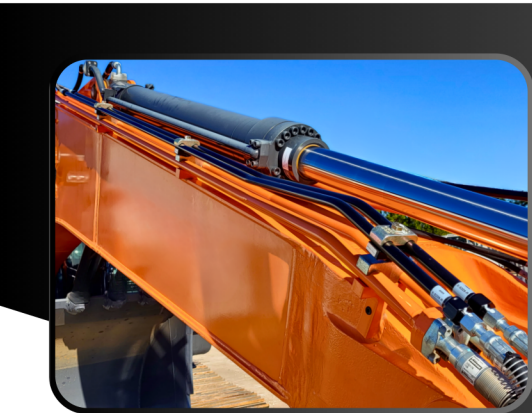


BEST VALUE

ALL AUXILIARY HYDRAULIC KITS ARE NOT THE SAME...
SEE WHAT MAKES HCT KITS THE BEST

	HCT	Factory	Competition
FULL LENGTH TUBES HCT design uses single tube in the front and single tube in the back. <i>Competition uses multi tube design and shorter tube lengths.</i>	✓	✓	✗
BOLT ON DESIGN / POWDER COATED HCT kits are bolt on and designed to fit existing OEM brackets. Powder coated finish gives longer life.	✓	✗	✓
SINGLE O-RING CONNECTION HCT tubes and hoses require single O-Ring per (ORFS) connection. <i>Competition uses a male union which requires twice the O-Ring per (ORFS) connection.</i>	✓	✓	✗
STEEL CLAMPS HCT steel clamps are custom designed for a tight fit. <i>Competition uses aluminum clamps that are not as reliable.</i>	✓	✓	✗
THICK WALL TUBING HCT has the thickest wall hydraulic tubing in the industry. <i>Competitors' kits are noticeably lighter in weight.</i>	✓	✓	✗
WELDED TUBE ENDS HCT welds tube ends providing durability and reliability. <i>Competition provides flared compression fittings (not welded).</i>	✓	✓	✗
STEEL WIRE & PLASTIC HOSE PROTECTION HCT provides steel wire guard (stick hoses) and plastic guarding (valve compartment). <i>Competition provides bare hose.</i>	✓	✓	✗
INTEGRATE w/ FACTORY MONITOR Optional feature allows monitor software to control flow and function.	✓	✓	✓
INSTALLATION INSTRUCTIONS HCT provides detailed instructions with photos and CAD drawings <i>Competition provides installation instructions.</i>	✓	✗	✓
SINGLE CRATE SHIPMENT HCT provides one single crate per standard kit shipment. <i>Competition uses 5-8 different packages to ship one standard kit.</i>	✓	✓	✗

FEATURES



- FULL LENGTH TUBES
- BOLT ON DESIGN



- HOSE PROTECTION
- LOCKING BALL VALVES



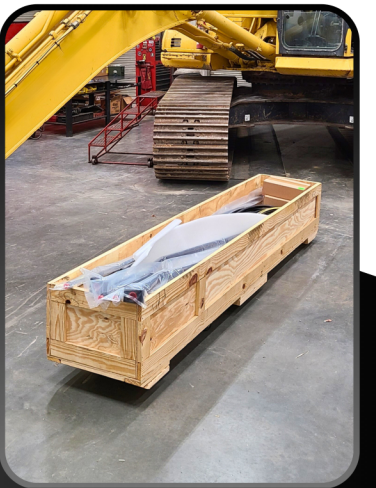
- SINGLE O-RING CONNECTION
- STEEL CLAMPS



- DETAILED INSTRUCTIONS
- COLOR PHOTOS



- MONITOR INTEGRATION
- CONTROL OPTIONS



- SINGLE CRATE SHIPMENTS